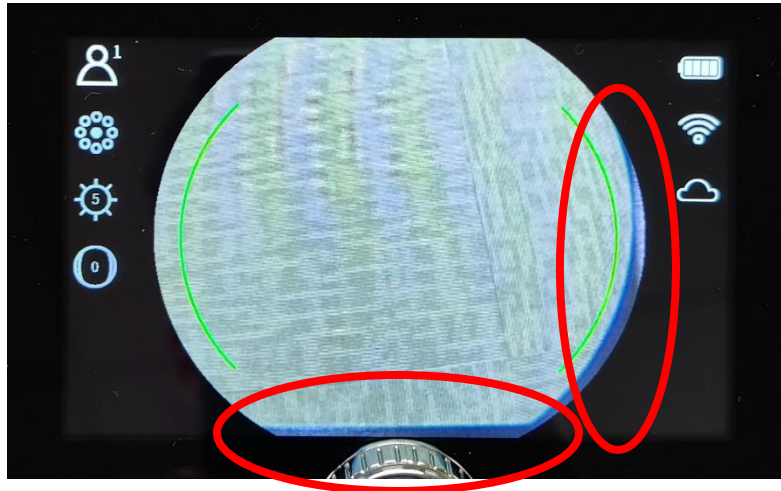


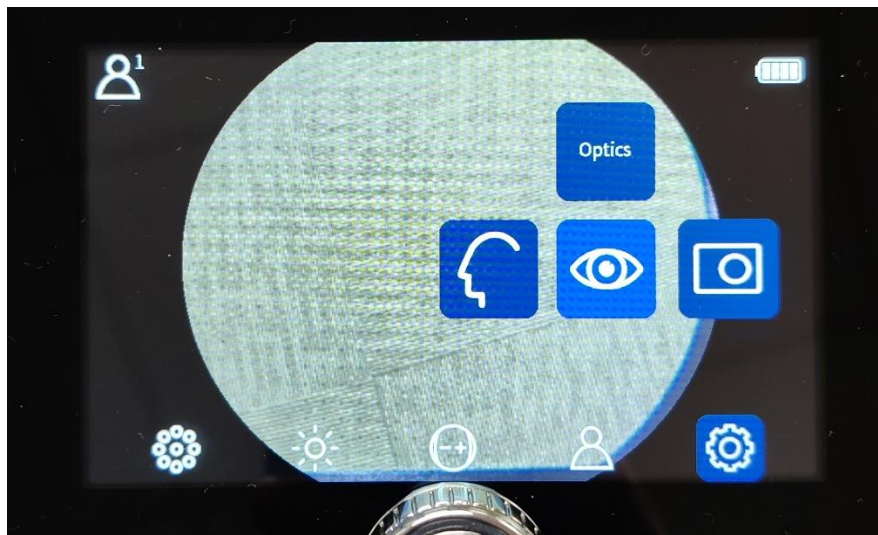
How to Align your Image using the Centering Tool

Please follow the steps below to learn how to fix camera cropping issues circled in red below:



Navigate to the Centering Tool

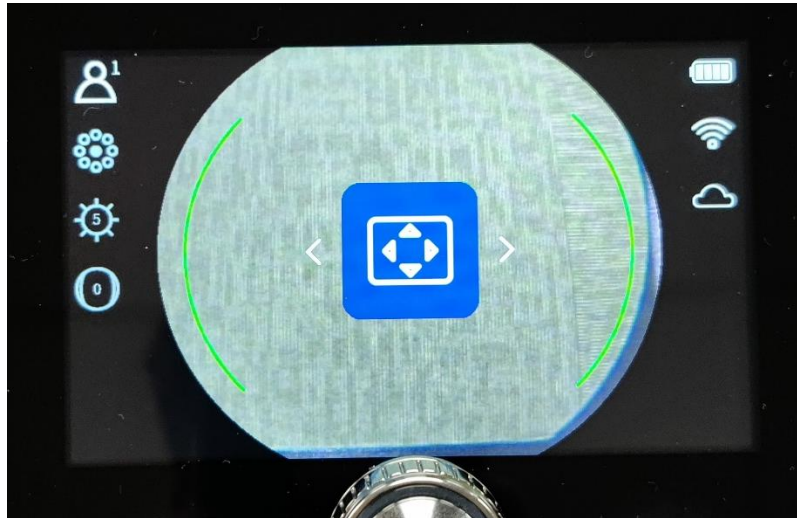
1. Click the middle button and go to **Settings**
2. Select **Optics**



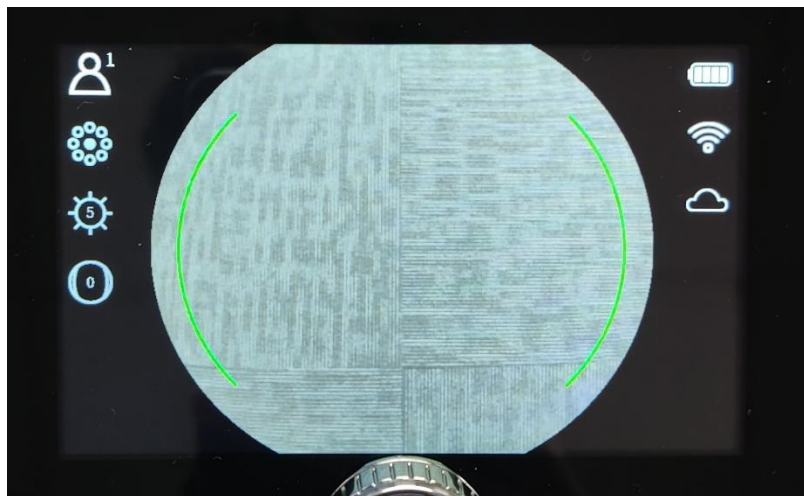
3. Go to Advanced Optics marked by a plus sign
4. Scroll all the way to the right and select **Centering**

How to use the Centering Tool

1. After selecting the tool, your screen should look like the image below:



2. Scroll the navigation wheel left and right to center the lens horizontally until you do not see any obstruction.
3. Click the navigation button again to align the lens vertically (the arrows will point up and down)
4. Click the navigation wheel to save your changes



You have now successfully centered your camera! If you need any additional assistance, please contact customer support at support@volk.com, or call us at 440-942-6161.