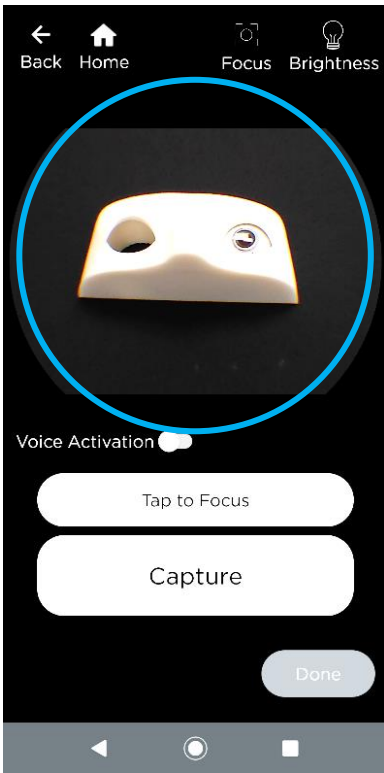
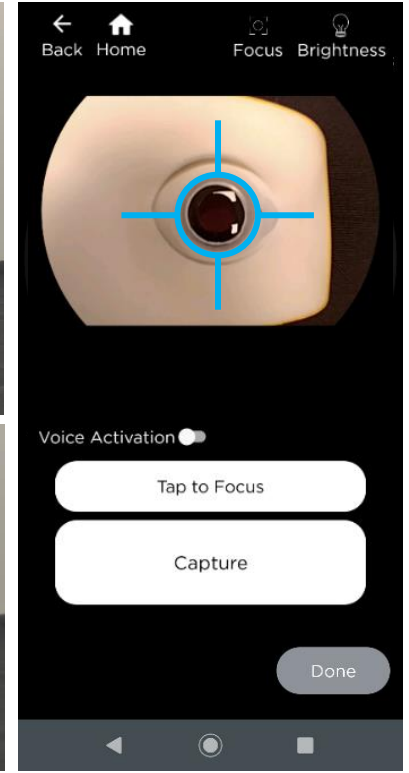
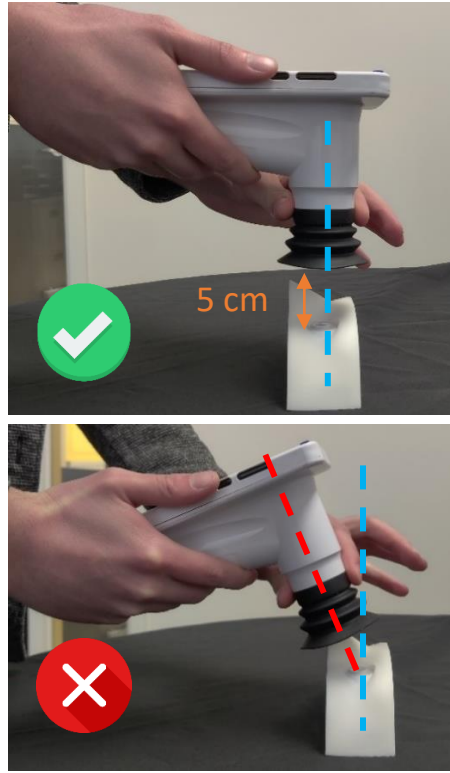


How to Image a Model Eye with VistaView®

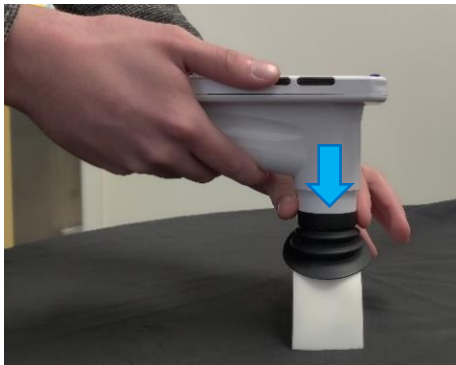
1 Navigate to the viewing area



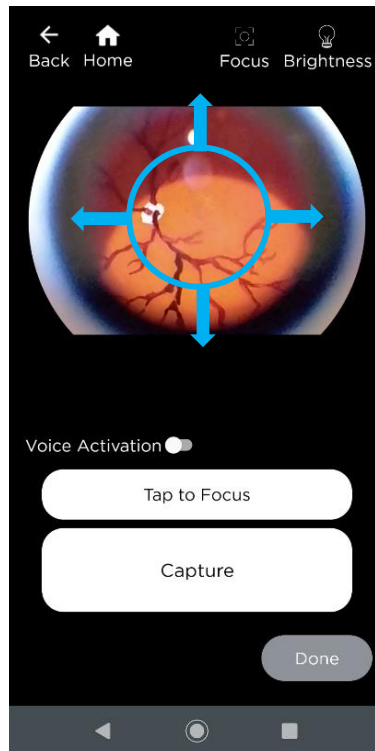
2 Align the camera & keep the pupil in the center



3 Approach the eye

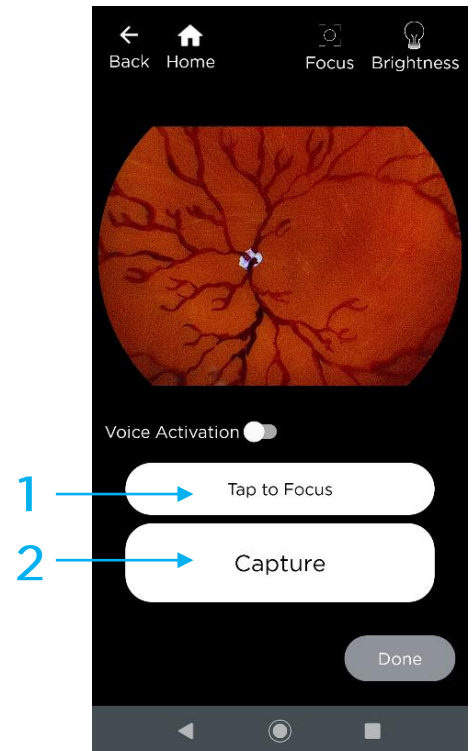


Gently compress the eye cup



The retina will fill into the viewing area as you keep compressing the eye cup

4 Focus & Capture



Once the retina fills the entire viewing area, select Tap to Focus, then tap Capture